

Droxford Church Rector

Author: Michael Collins

www.friendsofdroxfordchurch.org.uk





Rev. William Garnier, 1801-1831

William Garnier laid out the Rectory garden and, together with the Rector of Meonstoke, a relation of his who was a great lover of trees and an expert in their cultivation, he planted the Beech Walk in order that they might walk under pleasant shade to each others' houses. He was married to Lady Harriet North, daughter of John Brownlow North, Bishop of Winchester. Bishop North was half-brother to Lord North, Prime Minister from 1770 to 1782.



Rev. J.A. Griffith Colpoys, 1831-1868

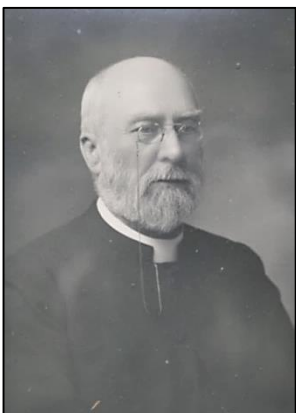
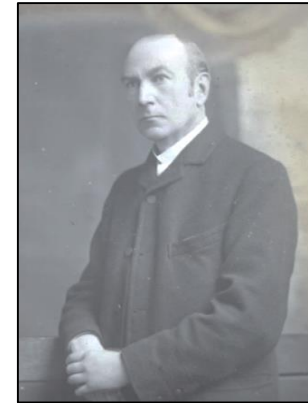
James Griffith Colpoys was a non-resident Rector for many years, living at St. Leonards-on-Sea for the sake of his wife's health. She was a daughter of John Bird Sumner, who became Archbishop of Canterbury. Archbishop Sumner was an Evangelical, and this may have had some influence on services here. Mrs Colpoys and son are buried near the east wall of the Church. The Rev. Colpoys died and was buried at St Leonards-on-Sea.

Rev. Stephen Bridge, 1868 -1886
The Rev. Stephen Bridge was an Evangelical churchman. He liked services to be decently and reverently conducted, and was jealous for the appearance of the Church. The pulpit came from his former parishioners at St. Matthew's, Denmark Hill, and the stained glass in the east window of the Lady Chapel is a memorial to Stephen Bridge and his wife Margaret.

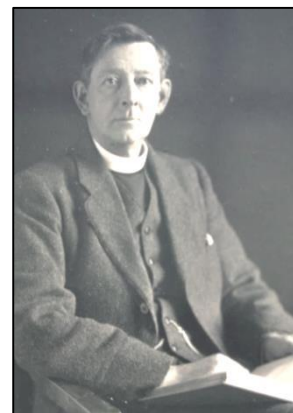


Some
19th & 20th Century
Rectors
of Droxford

Canon John Vaughan, 1902-1910
Canon Vaughan was a liberal Evangelical, a student, naturalist, antiquarian and an early pioneer of Biblical criticism. His literary works include *'The Memorials and Monuments of Winchester Cathedral'*. He was a Vice-President of the Hampshire Field Club, and carried out a major programme of restoration in Droxford Church, discovering many medieval features. He was Residentiary Canon of Winchester, and is buried in the Cathedral.



Canon Jacob Stephenson, 1910-1926
Canon Stephenson was an old-fashioned High Churchman who 'was accustomed to much more ... outward ceremonial than he was able to introduce into a parish where tradition was so strong on the other side. He adopted the Eastward position for celebrating, and wore the ecclesiastical colours in his stoles for the Eucharist, but beyond this he did not change the character of the Service'. During his time the church had big congregations, and a large choir.



Canon Leonard S. Etheridge, 1926 - 1945
In his time Canon Etheridge introduced:
- Sung Evensong
- Sung Morning Service
- Lighted candles
- A robed choir. Two members of the choir left as a result, but 'the congregation and parish soon came to appreciate ... that their Church was now no longer 'peculiar' in the ordering of its services'.
After his retirement in 1945 he continued to preach across the county. He is buried in the churchyard.